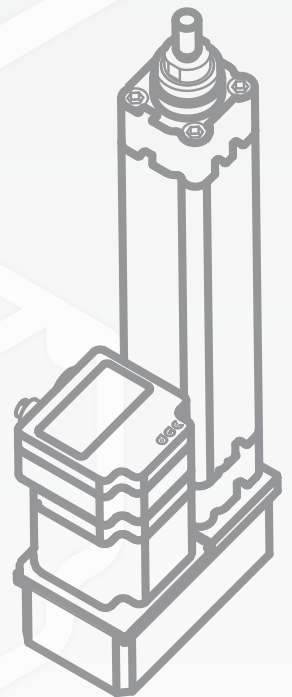
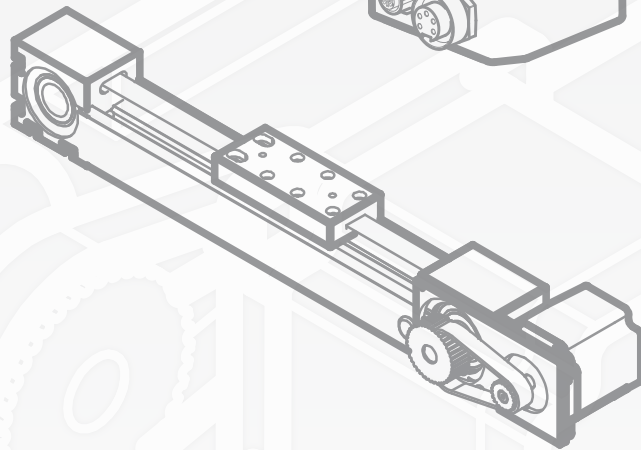
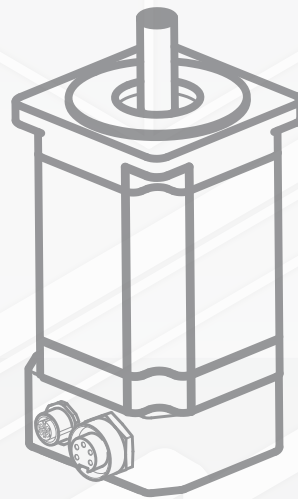


- Stepper motor drives
- Stepper motors
- Planetary motorgearboxes
- Motorized axes
- Motorized cylinders
- Worm motorgearboxes



Stepper motor drives

Since 1986, AEC is specialized in designing and manufacturing drives for stepper motors. 30 years of passion, competence and continuous research permit us to be present in the market with a complete range of programmable vector drives (VectorStep series - SMD1204, SMD2204, SMD5206), equipped with network and communication protocols.



- **Vector drive** **SMD1204**
- Programmable; Modbus RTU, CANopen, Profibus, Modbus TCP, EtherCAT, PROFINET protocols
- **Closed loop**



SMD2204

- **Multi-axis vector drive (up to three stepper motors)**
- Programmable; Modbus TCP, EtherCAT, PROFINET protocols
- **Anello chiuso**



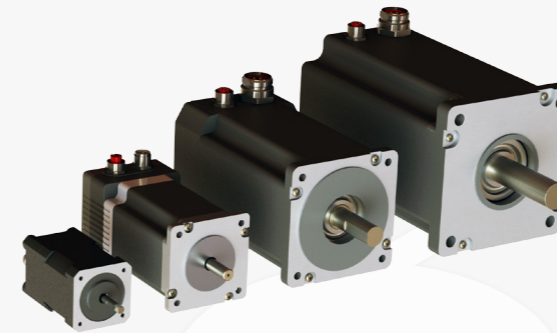
SMD5206

- **Vector drive**
- Programmable; Modbus RTU, CANopen, Profibus, Modbus TCP, EtherCAT, PROFINET protocols
- **Closed loop**
- Power supply up to 120 Vdc



Stepper motors

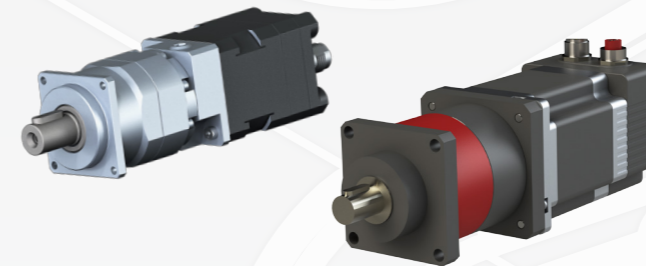
AEC has a well-stocked warehouse of hybrid high torque stepper motors and servomotors. A wide range of versions is available: sizes from Nema 17 to Nema 42, versions with terminal box, integrated Push Pull or Line Driver encoders, M12 and 7/8" connectors output.



- Holding torque from 0,2 up to 30Nm
- Terminal box
- M12 and 7/8" connectors
- **Integrated Push Pull or Line Driver encoder**

Planetary motorgearboxes

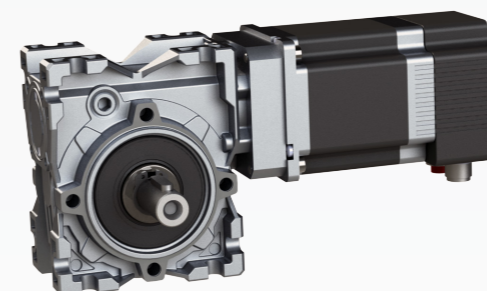
AEC offers a wide range of planetary gearboxes series "IPlanetaryGearSmart", assembled with stepper motors with terminal box and encoder. Several sizes, flanges and output shafts are available.



- Combined with stepper motors from Nema 17 to Nema 42 flange.
- Backlash down to 3'
- Dynamic efficiencies up to 96%
- Reduction ratio from $i=3$ up to $i=100$.

Worm motorgearboxes

AEC optimized the coupling of worm gearboxes with stepper motors. The "IWormGearSmart" series is characterized by compact dimensions with high efficiencies, and it is available in various output options and reduction ratios.



- Combined with stepper motors from Nema 23 to Nema 42 flange.
- High torques at the output shaft, with efficiencies close to 90%
- Several output options and reduction ratios.

AEC - Smart Motion Equipment

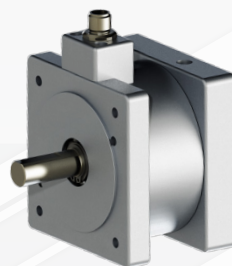
Motorized cylinders and axes Brakes and accessories

AEC completes its range with the motorized axes series "ILinearSmart" and the motorized cylinders series "IElectricCylinder". AEC can also supply the accessories needed to complete applications or machineries, such as AC/DC converters, transformers, switching power supplies, electromagnetic brakes (also with M12 connector output), operator panels, cables and connectors.



Motorized cylinders

- In compliance with ISO 6431 standards
- Combined with stepper motor, direct or parallel coupling.
- "C" or "H" type guiding units

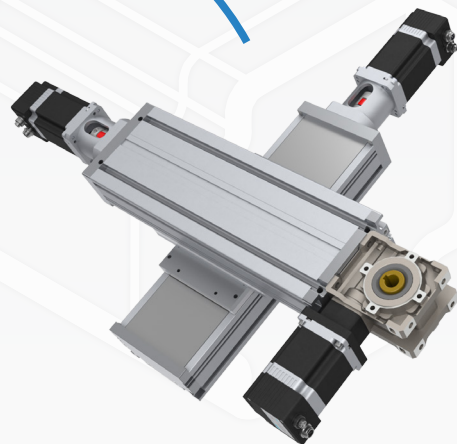
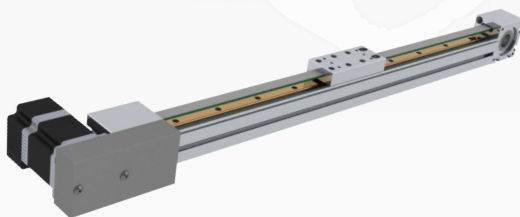


Electromagnetic brakes

- Holding brakes combinable with motors series M57SH, M60SH or M86SH, equipped with their matching output flanges (Nema 23, 24 and 34 respectively).
- M12 power supply connector

Motorized axes

- Belt or ball-screw units, XYZ Cartesian systems
- Self-supporting profile in anodized aluminium
- Linear guides and slides with caged ball bearings



AEC s.r.l.

Via Zambon, 33/A • 36051 Creazzo (VI) - Italy • Tel. +39 0444 370088
info@aec-smd.it • www.aec-smd.it